

VIP2400

Ruggedized 2.4 GHz OFDM Broadband Ethernet / Serial Gateway

The VIP2400 is a ruggedized high power broadband Ethernet & Serial Gateway. Responding to industry demands for greater speed and throughput, the VIP2400 brings long-range wireless network communications to an entirely new performance level. The VIP2400 provides dual Ethernet ports for WAN and LAN connectivity, as well as extensive serial communications that supports any RS232/RS485/RS422 device!

Up to 54 Mbps

802.11b/g WiFi

Enhanced Firewall

Extended Temperature

Dual Ethernet

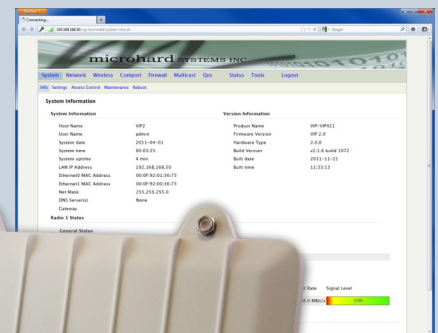
RS232/485/422 Port



Features

- Up to 54 Mbps data rate
- Support for 802.11b/g WiFi Devices - 5, 10, 20, 40 MHz Channels
- Firewall with ACL Security, Port Forwarding
- Access Point, Repeater, and Client/Station, MESH modes, Subscriber Roaming
- Serial Gateway (RS232/RS485/RS422)
- Comprehensive VLAN, QoS & Spanning Tree Support
- TDMA / WOPR Protocol
- RSSI LEDs for Antenna Alignment
- Dual Ethernet ports (WAN/LAN)
- Wide operating temperature (-40°C to +85°C)
- Administration via local console, telnet, web browser, SNMP
- Local and remote wireless firmware upgradable **IP67 Outdoor Enclosure**

Powerful User Interface



◆ MESH ◆ Serial/RS485 ◆ WiFi ◆ Ethernet ◆ Firewall

VIP2400

Specifications

Frequency	2.4000 - 2.4835 GHz	Network Advanced Protocols	IP Routing - static Routing, IP/ RIPv1 (RFC1058) IP/RIPv2 (RFC1388), CIDR (RFC1519), ICMP (RFC791), ARP(RFC826) NAT and Port Forwarding (Routing mode only) PPPoE Client (Routing mode only) PPTP for VPNs Network 802.1d Spanning Tree Protocol DHCP Server, Relay, and Client / DHCP Server Reservation Bidirectional Control, Bandwidth Control, Full 802.1Q VLAN Support, Proprietary Long Distance Algorithm for ACK and CTS time-out adjustment support Firewall and Packet/URL Filtering (Routing mode only) Multicast Routing support																				
Spread Method	OFDM/QPSK/16QAM/64QAM																						
Radio Operation	IEEE 802.11 b/g																						
Link Rate	Up to 54Mbps																						
Bandwidth	5MHz, 10MHz, 20MHz, 40MHz (selectable)																						
Error Detection	ARQ																						
Encryption	WEP, WPA, WPA2 (permit required for export outside Canada & USA)																						
Range	Up to 10 miles (16 km) (Antenna Dependant)																						
Sensitivity	-97dBm @ 6Mbps -74dBm @ 54Mbps																						
Output Power	Up to 30dBm (1W)																						
Ports	<table border="0"> <tr> <td>Serial Data</td> <td>RS232: RxD, TxD, RTS, CTS, DCD, DSR, DTR</td> </tr> <tr> <td></td> <td>RS422: Tx+, Tx-, Rx+, Rx-</td> </tr> <tr> <td></td> <td>RS485: 4-wire/2-wire</td> </tr> <tr> <td></td> <td>300bps to 921kbps</td> </tr> <tr> <td>Serial Console</td> <td>RS232: RxD, TxD</td> </tr> <tr> <td>LAN Ethernet</td> <td>10/100BaseT IEEE802.3</td> </tr> <tr> <td>WAN Ethernet</td> <td>10/100BaseT IEEE802.3</td> </tr> </table>	Serial Data	RS232: RxD, TxD, RTS, CTS, DCD, DSR, DTR		RS422: Tx+, Tx-, Rx+, Rx-		RS485: 4-wire/2-wire		300bps to 921kbps	Serial Console	RS232: RxD, TxD	LAN Ethernet	10/100BaseT IEEE802.3	WAN Ethernet	10/100BaseT IEEE802.3	Connectors	<table border="0"> <tr> <td>Antenna</td> <td>RP-SMA Female Bulkhead (Outdoor: N-Female)</td> </tr> <tr> <td>Serial Data</td> <td>RS232 DB-9F Locking terminal connector</td> </tr> <tr> <td>Ethernet Console</td> <td>RJ-45 (x2) RS-232 DB-9F</td> </tr> </table>	Antenna	RP-SMA Female Bulkhead (Outdoor: N-Female)	Serial Data	RS232 DB-9F Locking terminal connector	Ethernet Console	RJ-45 (x2) RS-232 DB-9F
Serial Data	RS232: RxD, TxD, RTS, CTS, DCD, DSR, DTR																						
	RS422: Tx+, Tx-, Rx+, Rx-																						
	RS485: 4-wire/2-wire																						
	300bps to 921kbps																						
Serial Console	RS232: RxD, TxD																						
LAN Ethernet	10/100BaseT IEEE802.3																						
WAN Ethernet	10/100BaseT IEEE802.3																						
Antenna	RP-SMA Female Bulkhead (Outdoor: N-Female)																						
Serial Data	RS232 DB-9F Locking terminal connector																						
Ethernet Console	RJ-45 (x2) RS-232 DB-9F																						
Network Protocols	TCP, UDP, TCP/IP, ARP, ICMP, DHCP, HTTP, SNMP, FTP, Serial over IP, QoS, VoIP	Input Voltage	Standard: 9-30VDC Outdoor: 12-30VDC (POE)																				
Security	MAC Authentication, RADIUS Server, MAC Blocking, IP List (ACL), Firewall, Port Forwarding.	Environmental	-40°F to 185°F (-40°C to +85°C) 5-95% humidity, non-condensing																				
Operating Modes	Access Point, Station/Client, Repeater, Mesh	Weight	Standard: Approx. 395g Outdoor: Approx 1245g																				
Management	Local Serial Port Console, Telnet, WebUI, SNMP, FTP Upgrade, RADIUS authentication, TFTP, CLI (Command Line Interface)	Dimensions	Approx. 5.65" x 3.72" x 1.20" (145mm x 95mm x 30mm) Outdoor: 8.5" x 7.0" x 2.0"																				
Diagnostics	Remote Diagnostics, Monitor Utilities (Ping, ARP table, Bridge Table, DHCP active leases, CCQ), Link Test	Approvals	FCC Part 15.247 IC RSS210																				
Rejection	Excellent strong signal interference & rejection characteristics	Order Options																					
		-C1D2	Class 1 Div 2 (for use in hazardous environments)																				
		-IP67	Outdoor weatherproof Enclosure																				

Contact Information

Microhard Systems Inc.
150 Country Hills Landing N.W.
Calgary, AB, Canada T3K 5P3

Email: info@microhardcorp.com
Tel: (403) 248-0028
Fax: (403) 248-2762

Copyright 2014 Microhard Systems Inc.
Specifications subject to change without notice.

