

1W OEM 802.11b/g/n Serial/Ethernet WIFI Router w/LTE

The pX2LTE-NA2 combines our powerful pX2 WIFI router/gateway and a robust LTE Connection into a single compact OEM package. The LTE Connection provides North America LTE band compatibility, and can deliver up to 150 Mbps of download speeds. The embedded pX2 provides high power (1W), wide range, fast 802.11n WIFI access for remote devices to connect. The pX2LTE-NA2 features Dual Ethernet Ports, RS232 Serial, USB and GPS capabilities.

802.11 b/g/n (1W) WIFI

150 Mbps LTE w/Fallback

Compact Size

Ethernet | Serial | USB

Industrial Temperature

AP | Client | Repeater Modes

pXLTE-NA2 Features

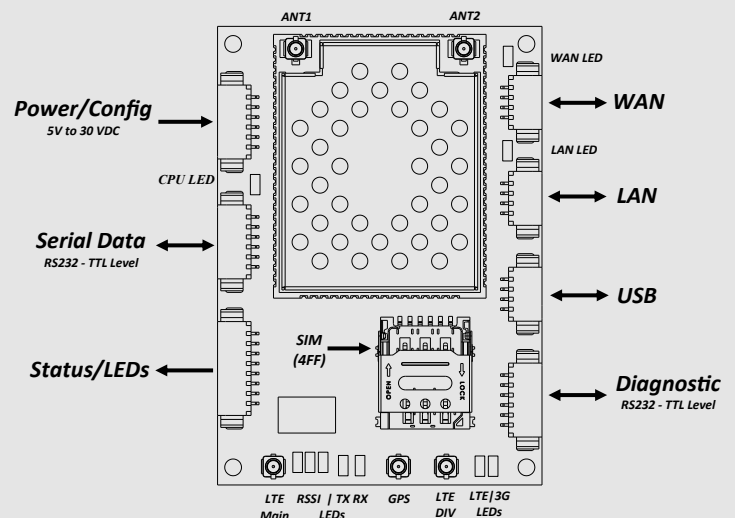
- High Power WiFi (up to 1W) w/ Excellent Rx Sensitivity
- 802.11b/g/n WiFi , up to 150 Mbps data rate
- 150 Mbps (DL) 4G/LTE Operation w/Fallback
- Firewall with ACL Security, Port Forwarding
- Full Scale Access Point, Client & Repeater Modes
- Dual Serial /Console Ports (RS232)
- Dual 10/100 Ethernet Ports (LAN/WAN)
- Industrial grade operating temperature (-40°C to +85°C)
- Standalone GPS
- Administration via console, telnet, web browser
- Local and remote wireless firmware upgradable

Only 30 grams!



1.6" X 2.25" X 0.35"

Optional Motherboard for Easy Testing & Evaluation!



pXLTE-NA2

Specifications

WiFi Specifications		Performance Specifications (WiFi)			
Frequency	2.4000 - 2.4835 GHz	Rate	Mode	Tx Power	Receive
Radio Operation	IEEE 802.11 b/g/n	1 Mbps	802.11b	30 dBm	-97 dBm ±1 dB
Output Power	Up to 30dBm (1W)	2 Mbps	802.11b	30 dBm	-96 dBm ±1 dB
Link Rate	Up to 150 Mbps	5.5 Mbps	802.11b	30 dBm	-95 dBm ±1 dB
Error Detection/Control	FEC/ARQ	11 Mbps	802.11b	30 dBm	-92 dBm ±1 dB
Operating Modes	Full Scale Access Point, Client, Repeater	6 Mbps	802.11g	30 dBm	-94 dBm ±1 dB
Encryption	WEP,WPA(PSK), WPA2(PSK), WPA+WPA2(PSK), WPA Enterprise (RADIUS), WPA2 Enterprise, WPA + WPA2 Enterprise	9 Mbps	802.11g	30 dBm	-93 dBm ±1 dB
Range	> 10 miles (16 km) (Antenna Dependent)	12 Mbps	802.11g	30 dBm	-91 dBm ±1 dB
Cellular Specifications		18 Mbps	802.11g	30 dBm	-90 dBm ±1 dB
Cellular Supported Bands	LTE FDD: B2,B4,B5,B12,B13,B14,B66,B71 WCDMA: B2,B4,B5	24 Mbps	802.11g	28 dBm	-86 dBm ±1 dB
Cellular Data Features*	LTE FDD: Max. 150 Mbps DL, 50 Mbps UL LTE TDD: Max. 130 Mbps DL, 35 Mbps UL DC-HSPA+: Max. 42 Mbps DL, 5.7 Mbps UL WCDMA: Max. 384 Kbps DL, 384 Kbps UL	36 Mbps	802.11g	28 dBm	-83 dBm ±1 dB
<i>*Module Standalone Lab Performance</i>		48 Mbps	802.11g	26 dBm	-77 dBm ±1 dB
General Specifications		54 Mbps	802.11g	26 dBm	-75 dBm ±1 dB
Ports	RS232 (Tx, RX, RTS, CTS, DTR, DSR) 300bps to 921kbps Dual 10/100BaseT IEEE802.3 USB 2.0	MCS0	802.11n (HT20)	30 dBm	-96 dBm ±1 dB
Management	Local Serial Port Console, Telnet, WebUI, SNMP, FTP Upgrade, TFTP, CLI (Command Line Interface)	MCS1	802.11n (HT20)	30 dBm	-95 dBm ±1 dB
Network Advanced Protocols	TCP, UDP, TCP/IP, ARP, ICMP, DHCP, HTTP, SNMP, FTP, Serial over IP IP Routing - static Routing, IP/RIPv1, IP/RIPv2, CIDR, ICMP, ARP NAT and Port Forwarding (Routing mode only). Full 802.1Q VLAN Support, Access Control Lists (MAC & IP), MAC/IP Binding, Multiple SSID Support	MCS2	802.11n (HT20)	30 dBm	-92 dBm ±1 dB
Diagnostics	Remote Diagnostics, Monitor Utilities (Ping, ARP table, DHCP active leases, CCQ), Link Test	MCS3	802.11n (HT20)	28 dBm	-90 dBm ±1 dB
Input Voltage	7-30 VDC	MCS4	802.11n (HT20)	28 dBm	-86 dBm ±1 dB
Connectors	WiFi Antenna: UFL x2 (ANT1, ANT2) LTE Antenna: UFL x3 (Main, Div, GPS) Power: 6-Pin Quick Connect Serial/Console: 2x 6-Pin Quick Connect Status/LEDs: 8-Pin Quick Connect WAN/LAN: 2x 4-Pin Quick Connect USB: 4-Pin Quick Connect SIM Slot: Nano(4FF)	MCS5	802.11n (HT20)	26 dBm	-83 dBm ±1 dB
Environmental	Temperature: -40°F to 185°F (-40°C to +85°C) Humidity: 5-95% humidity, non-condensing	MCS6	802.11n (HT20)	26 dBm	-77 dBm ±1 dB
Weight	Modem: ~ 30 grams Motherboard: ~ 55 grams	MCS7	802.11n (HT20)	26 dBm	-75 dBm ±1 dB
Dimensions	Modem: 1.60" x 2.25" x 0.35" (40x57x9mm) Motherboard: 2.6" x 3.56" x 0.58" (70x90x14.5mm)	MCS0	802.11n (HT40)	30 dBm	-94 dBm ±1 dB
Approvals	FCC ISED Canada (Industry Canada) RoHS	MCS1	802.11n (HT40)	30 dBm	-93 dBm ±1 dB
		MCS2	802.11n (HT40)	30 dBm	-90 dBm ±1 dB
		MCS3	802.11n (HT40)	28 dBm	-89 dBm ±1 dB
		MCS4	802.11n (HT40)	28 dBm	-84 dBm ±1 dB
		MCS5	802.11n (HT40)	26 dBm	-81 dBm ±1 dB
		MCS6	802.11n (HT40)	26 dBm	-75 dBm ±1 dB
		MCS7	802.11n (HT40)	26 dBm	-73 dBm ±1 dB

Order Options

Model pXLTE-NA2

Contact Information

Microhard Systems Inc.
150 Country Hills Landing N.W.
Calgary, AB, Canada T3K 5P3

Email: info@microhardcorp.com
Tel: (403) 248-0028
Fax: (403) 248-2762

Copyright 2022 Microhard Systems Inc.
Specifications subject to change without notice.

